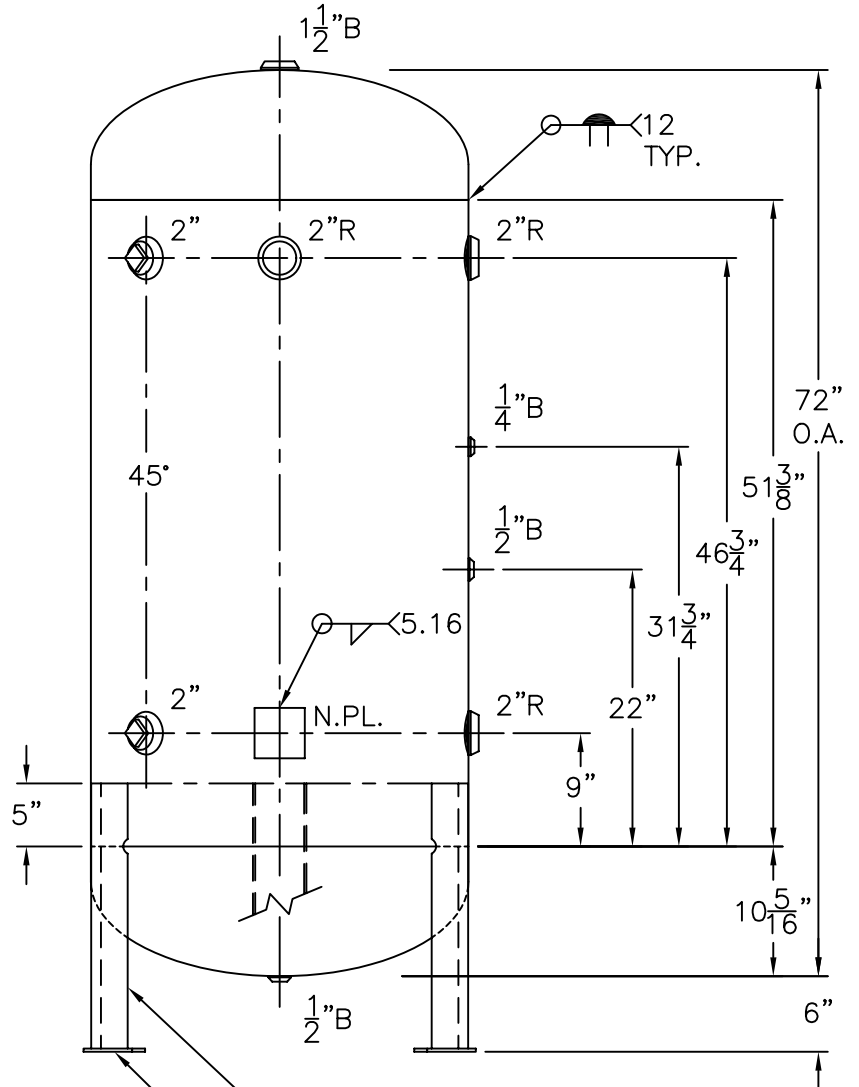


2"R W/ C.I. PLUG  
INSP. OPENING  
(2) PLC'S.



(3) 2 1/2" x 2 1/2" x 3/16" THK.  
x 21 1/16" LG. ANGLE LEGS

(3) 4" x 4" x 1/4" THK.  
PAD W/ 3/4" Ø HOLE

NOTE: 1) HYDRO @ 325 PSIG. MIN.

SHELL / HEADS	.179" SA-414-G 2:1 S.E.
JOGGLE	
.207" SA-455 (.205" MIN.)	
M.A.W.P.	250 PSIG. @ 400 °F
M.D.M.T.	-20 °F @ 250 PSIG.
ASME SECTION VIII	DIV. 1, 2001 ADD 2003
X-RAY: RT-4 SPOT L.S. & HDS. G.S.	
GALLONS: 200	WT. 441 LBS.
SERIAL NO.	
N.B.	

30-VC-200-1	REV. 5-19-04
FOR: HANSON STANDARD	DATE: 3-29-85
VERT. AIR TANK	
INSIDE: UNPAINTED	
OUTSIDE: PRIME	
LEG-ZONE 4-15 KM.	
BY: J.G.	SCALE: 3/4"=12"
<b>ROY F. HANSON JR. MFG.</b>	
1924 COMPTON AVE.	
LOS ANGELES, CA 90011	

