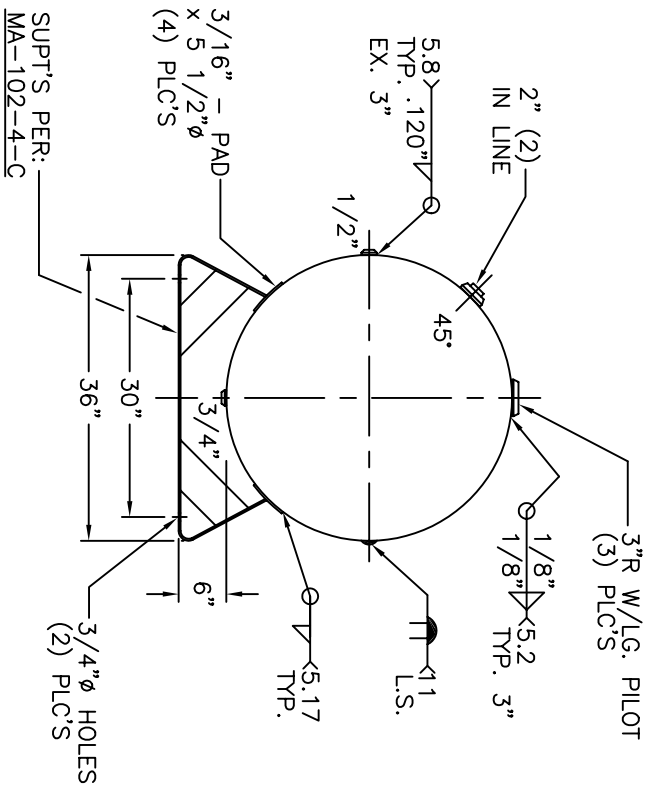


VIEW W/OUT SUPT'S



NOTE: 1) HYDRO @ 325 PSIG. MIN.

SHELL / HEADS		REV. 11-12-02	
.210" SA-455 2:1 S.E.	JOGGLE - .249 OFFSET	36-HC-400-W	DATE: 9-5-80
.248" SA-455		FOR: HANSON STANDARD	
		HORIZ. AIR TANK	
		INSIDE: UNPAINTED	
M.A.W.P. 250 PSIG. @ 400 °F		OUTSIDE: PRIME	
M.D.M.T. -20 °F @ 250 PSIG.		CAD-"B" SIZE UNDER "STD"-SERIES	
ASME SECTION VIII DIV. 1, 2001		BY: J.G. SCALE: 3/4"=12"	
X-RAY: RT-4 SPOT L.S. & G.S.		<b>ROY E. HANSON JR. MFG.</b>	
GALLONS: 400	WT. 855 LBS.	1924 COMPTON AVE.	
SERIAL NO.		LOS ANGELES, CA 90011	