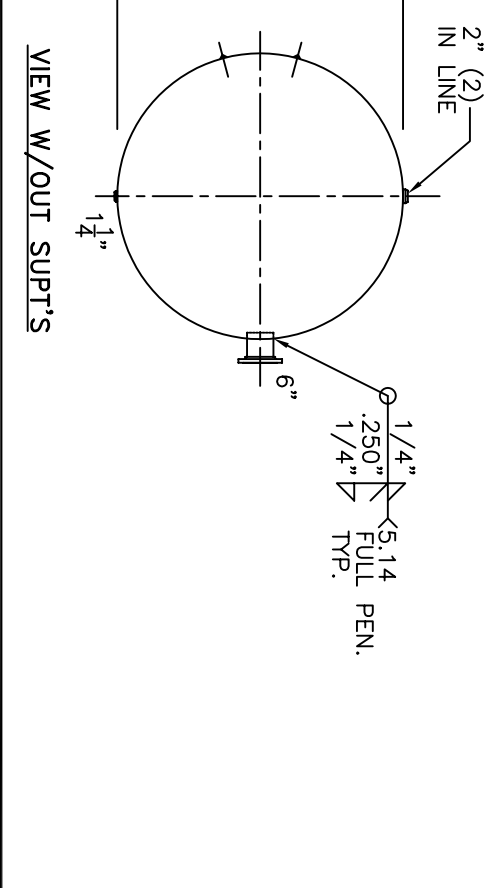


NOTE: 1) HYDRO @ 166 PSIG. MIN.
 2) WELDS TO, OR JOINING SA-612 HAVE W.P.S. W/SUFFIX "B".

SHELL / HEADS		REV. 11/27/02	
LEFT	-.260" SA-612 2:1 S.E.	72-HG-3800-W	DATE: 1/18/81
RIGHT	-.260" SA-4612 2:1 S.E.	FOR: HANSON STANDARD	
	(.248" MIN.)	HORIZ. AIR TANK.	
	.250" SA-455	INSIDE: UNPAINTED	
M.A.W.P.	125 PSIG. @ 400 °F	OUTSIDE: PRIME	
M.D.M.T.	-20 °F	CAD "B" SIZE UNDER "STD"-SERIES	
ASME SECTION VIII	DIV. 1, 2001 ADD 2002	BY: J.G. SCALE: 3/8"=12"	
X-RAY:	RT-4 SPOT L.S. ONLY	ROY E. HANSON JR. MFG.	
GALLONS:	3800	1924 COMPTON AVE.	
SERIAL NO.		LOS ANGELES, CA 90011	
N.B.			



VIEW W/OUT SUPPTS